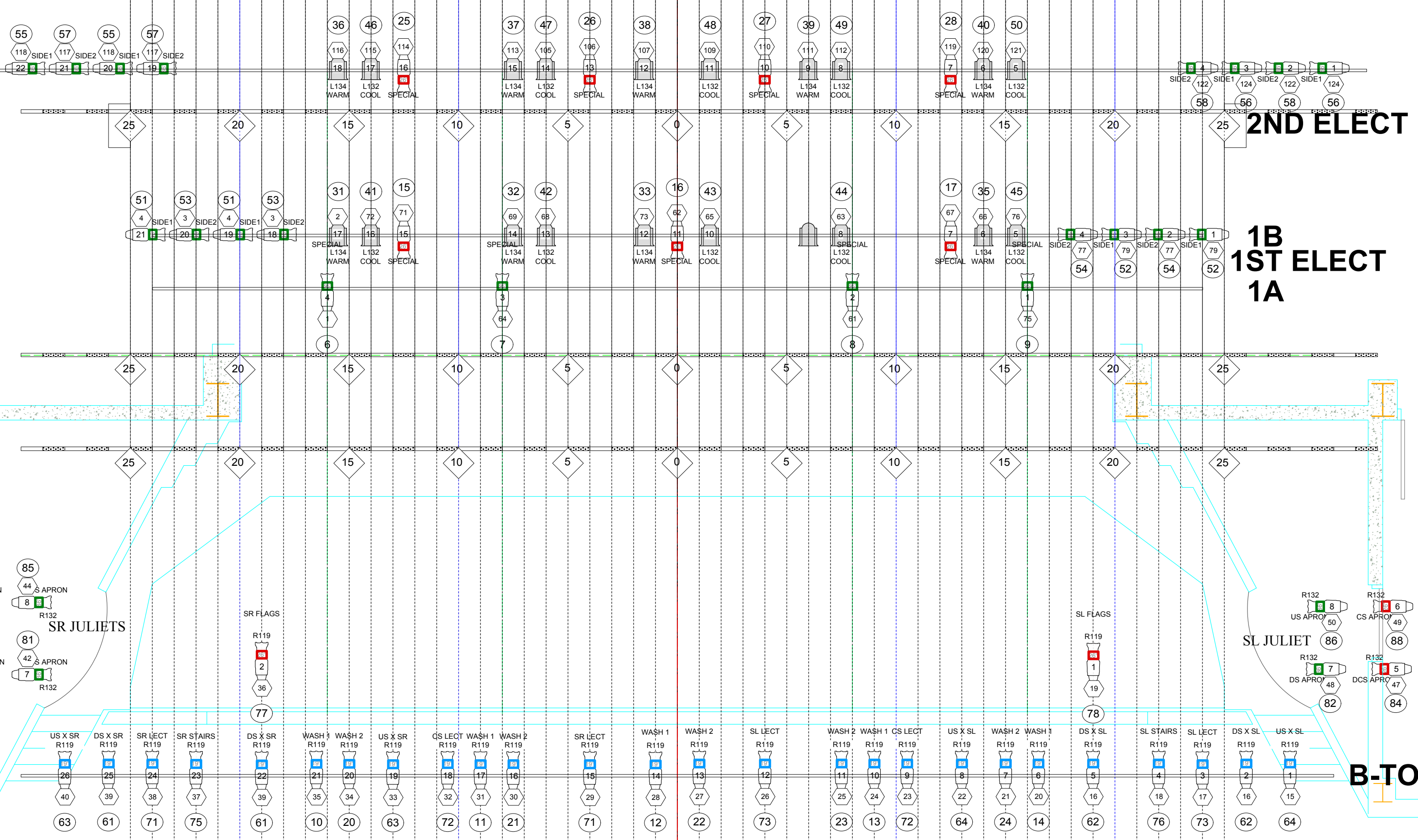


- Pipe 30
- Pipe 29
- Pipe 28
- Pipe 27
- Pipe 26
- Pipe 25
- Pipe 24
- Pipe 23
- Pipe 22
- Pipe 21
- Pipe 20
- Pipe 19
- Pipe 18
- Pipe 17
- Pipe 16
- Pipe 15
- Pipe 14
- Pipe 13
- Pipe 12
- Pipe 11
- Pipe 10
- Pipe 9
- Pipe 8
- Pipe 7
- Pipe 6
- Pipe 5
- Pipe 4
- Pipe 3
- Pipe 2
- Pipe 1

6th legs  
4th legs  
Mid Black  
3rd legs  
2nd Electric  
2nd legs  
Movie Screen  
1st Electric  
Legs  
Main  
1st Border

Circuit transfer box  
FOH:20-34  
SR JULIETS:41-44  
SL JULIETS:47-50  
COMPANY SWITCH  
400AMP



FOH FI FCT (Not drawn in Place)

BEAMPORTS (Not drawn in Place)

Instruments	Num In Inventory	Used	Remaining
7" Fresnel(HSE)	40	20	20
S4 36deg(GREEN)	0	24	-24
S4 26deg(RED)	0	15	-15
S4 PAR MFL(HSE)	0	4	-4
S4 19deg(HSE)	0	26	-26
S4 10deg	0	9	-9
Accessories	Num In Inventory	Used	Remaining

**Houselights:**  
Channel (96)-Dimmers 499-512

Show Name Mem Aud Rep Plot		
Reference 1/4"=1'	Drawn By M. Starobin	Date 1/28/2012
CAD File Name MemAudTheatreRep_Plot_2012		