

# FRONT CROSS WASH

(77-78)-Flag Specials  
Top of beam to include row of 10' H Flags  
Bottom cut to 3' from Prosc wall

(77)  
FLAGS

SR  
LECT  
(71)

CS  
LECT  
(72)

SL  
LECT  
(73)

(78)  
FLAGS

(71-73)-Lecturn Specials: SR & SL align with aisle  
Top cut to 1' over head, to prosc. line  
Bottom cut to elevator pit line  
Side cuts 6' across  
2 instruments per Lecturn, all cuts should match

(75)  
STAIRS

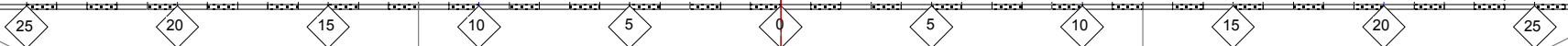
SR  
SIGNER  
(19)

(18-19)-Signer Specials  
Focus to include 2 people standing

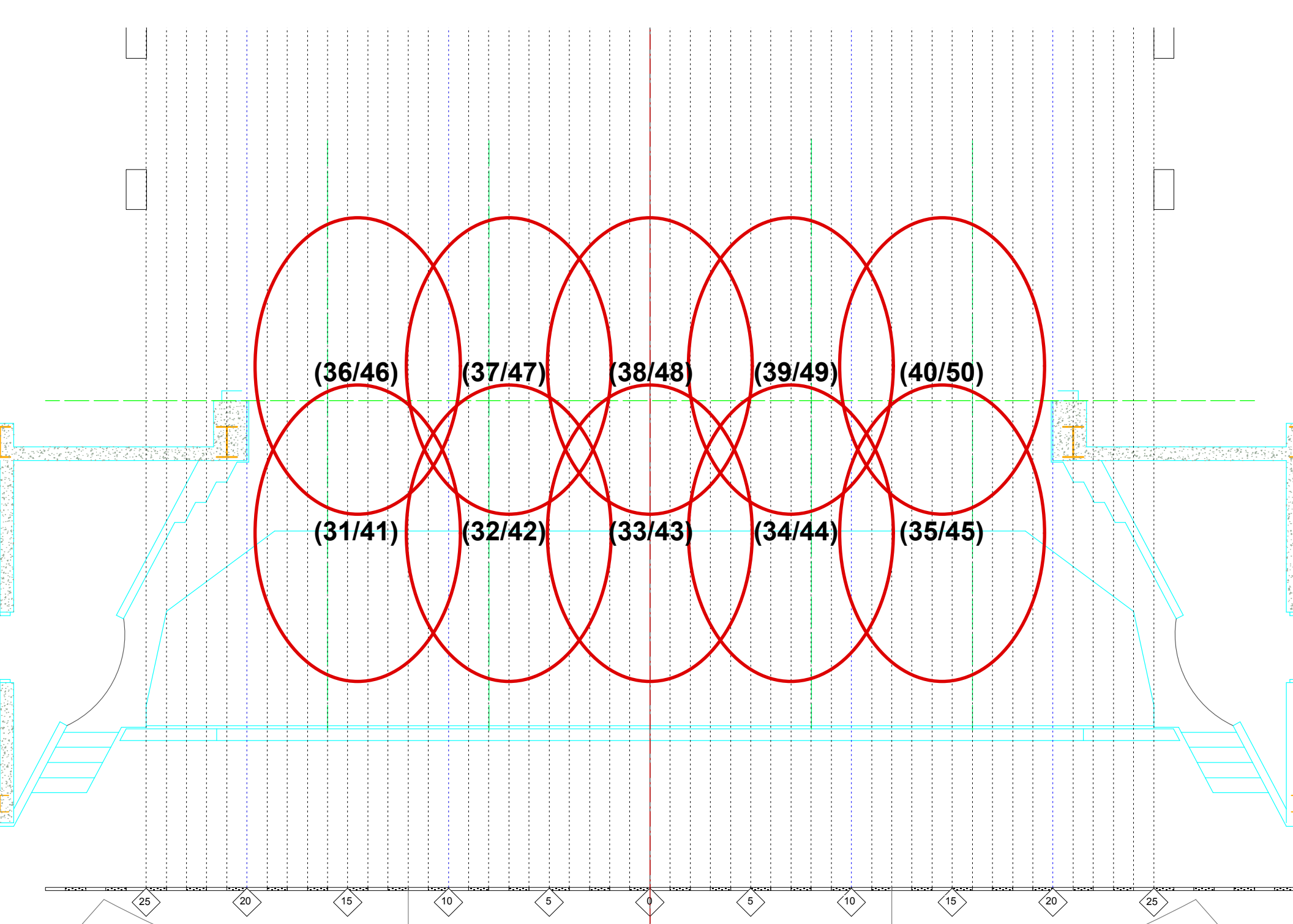
SL  
SIGNER  
(18)

(76)  
STAIRS

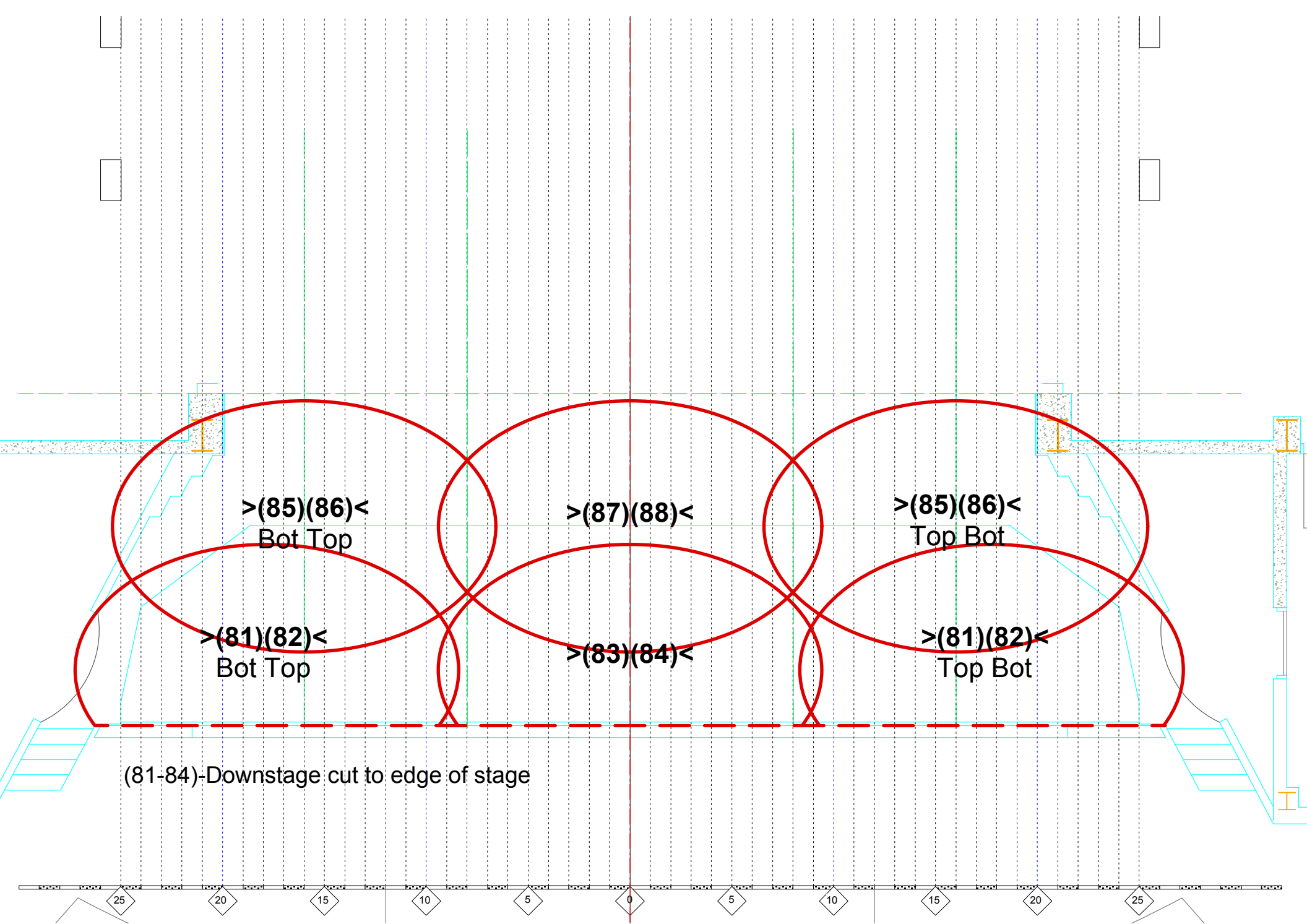
(75-76)-Stair Specials  
Top cut to include person on stairs  
Bottom cut to stairs



# FOH Specials



**Back Lights**



>(85)(86)<  
Bot Top

>(87)(88)<

>(85)(86)<  
Top Bot

>(81)(82)<  
Bot Top

>(83)(84)<

>(81)(82)<  
Top Bot

(81-84)-Downstage cut to edge of stage

**Julets**

25

20

15

10

5

0

5

10

15

20

25